



HA

PENTHOUSESTUDIO  
GARDENSTUDIO  
2 BR PENTHOUSE  
2 BR GARDENAPARTMENT





NºHA





NºHA





NºHA



# NºHA

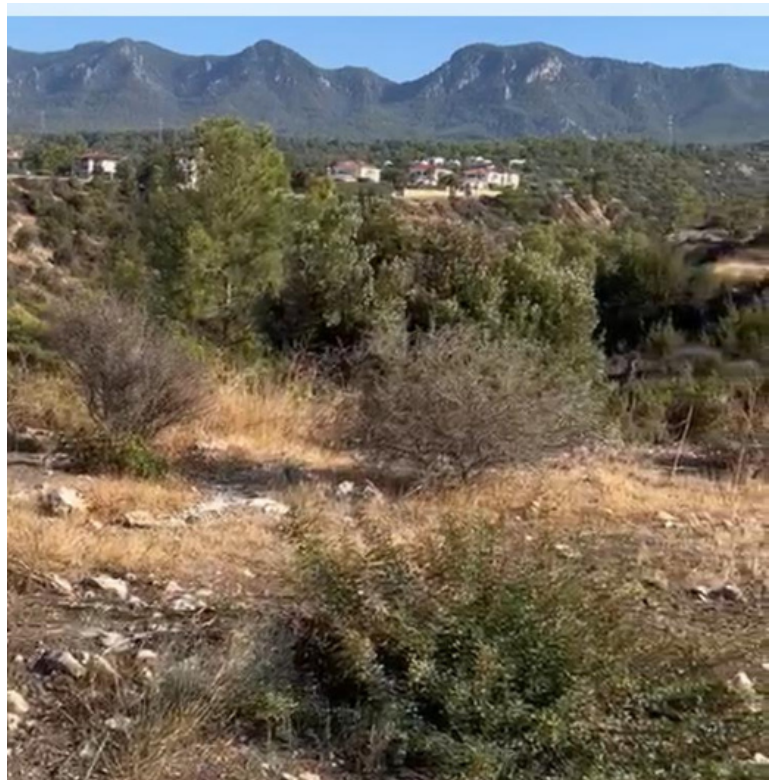


# N°HA

MEERBLICK



BERGBLICK



# N°HA

## FERTIGSTELLUNG 12/25

- BEI ESENTEPE, 5 MIN. ZUM GOLFPLATZ, 25 MIN. NACH GIRNE
- NEUES BAUPROJEKT MIT TRAUMHAFTEM BLICK
- EXKLUSIVE ANLAGE, BESTEHEND AUS 3 EINZELPROJEKTEN
- GEHOBENE AUSSTATTUNG & HOCHWERTIGE MATERIALIEN
- KLIMAAANLAGE UND HEIZUNG SIND IM PREIS INKLUDIERT
- EXKL. KÜCHENGERÄTE
- EINBAUSCHRÄNKE UND GEFLIESSTE DACHTERRASSE INKL.
- 2 GEMEINSCHAFTSPOOLS, POOLBAR UND 3 RESTAURANTS
- FITNESSRAUM
- GANZJÄHRIG BETRIEBENE SPA- UND WELLNESSANLAGE
- REINIGUNGS-, VERMIET-, UND CONCIERGESEERVICE
- WORKSPACE UND KONFERENZRÄUME
- FLUGHAFEN ERCAN CA. 40 MIN. / LARNACA CA. 1,5 STD.
- SUPERMARKT IN DER NÄHE

# NØHA

STAND 13.11.2022





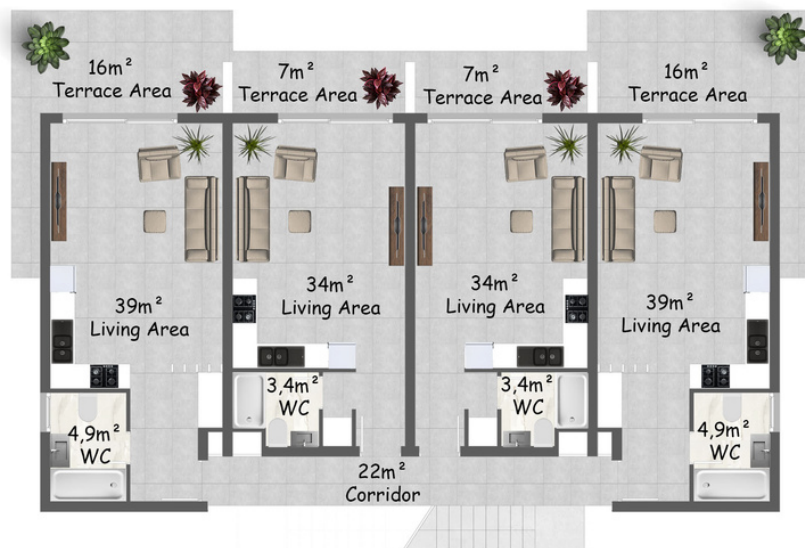
# NOHA

STAND 13.11.2022

NO	APARTMENT TYPE	FLOOR	CLOSED GROSS AREA m <sup>2</sup>	CLOSED TERRACE AREA m <sup>2</sup>	TOTAL CLOSED AREA m <sup>2</sup>	OPEN TERRACES m <sup>2</sup>	ROOF TERRACE m <sup>2</sup>	LISTING PRICE (GBP)	STATUS
A1	Corner studio	Garden	44	16	60	-	-	£89,900	AVAILABLE
A2	Studio	Garden	38	7	45	-	-	£84,900	AVAILABLE
A3	Studio	Garden	38	7	45	-	-	£84,900	AVAILABLE
A4	Corner studio	Garden	44	16	60	-	-	£89,900	AVAILABLE
A5	Corner studio	Penthouse	44	-	44	16	30	-	RESERVED
A6	Studio	Penthouse	38	7	45	-	24	-	RESERVED
A7	Studio	Penthouse	38	7	45	-	24	-	RESERVED
A8	Corner studio	Penthouse	44	-	44	16	30	-	RESERVED
B1	Corner studio	Garden	44	16	60	-	-	£89,900	AVAILABLE
B2	Studio	Garden	38	7	45	-	-	£84,900	AVAILABLE
B3	Studio	Garden	38	7	45	-	-	£84,900	AVAILABLE
B4	Corner studio	Garden	44	16	60	-	-	-	RESERVED
B5	Corner studio	Penthouse	44	-	44	16	30	-	RESERVED
B6	Studio	Penthouse	38	7	45	-	24	-	RESERVED
B7	Studio	Penthouse	38	7	45	-	24	-	RESERVED
B8	Corner studio	Penthouse	44	-	44	16	30	-	RESERVED
C1	Corner studio	Garden	44	16	60	-	-	-	RESERVED

TYPE - HANGING GARDEN'S VILLAGE

(D2), A3(D3),A4(D4),  
C2), B3(C3), B4(C4)



# NºHA

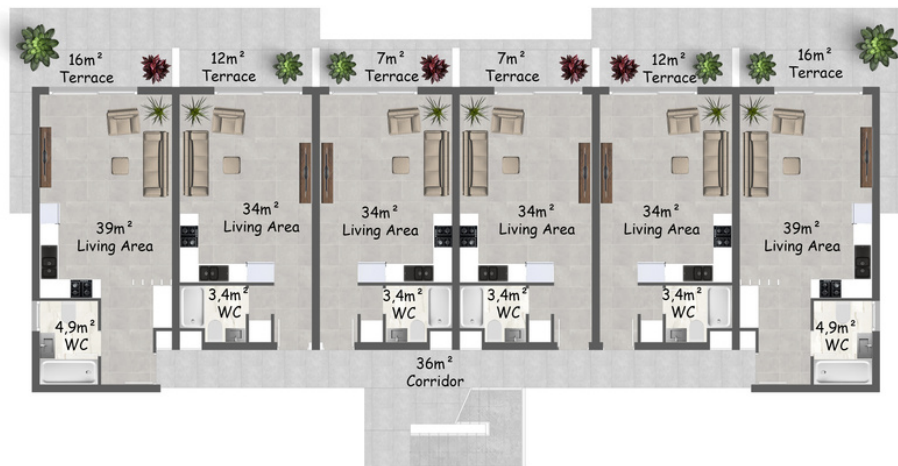
STAND 13.11.2022

C1	Corner studio	Garden	44	16	60	-	-	-	RESERVED
C2	Studio	Garden	38	12	50	-	-	-	RESERVED
C3	Studio	Garden	38	7	45	-	-	£84,900	AVAILABLE
C4	Studio	Garden	38	7	45	-	-	£84,900	AVAILABLE
C5	Studio	Garden	38	12	50	-	-	£84,900	AVAILABLE
C6	Corner studio	Garden	44	16	60	-	-	-	RESERVED
C7	Corner studio	Penthouse	44	-	44	16	30	-	RESERVED

C8	Studio	Penthouse	38	-	38	7	24	-	RESERVED
C9	Studio	Penthouse	38	-	38	7	24	-	RESERVED
C10	Studio	Penthouse	38	-	38	7	24	-	RESERVED
C11	Studio	Penthouse	38	-	38	7	24	-	RESERVED
C12	Corner studio	Penthouse	44	-	44	16	30	-	RESERVED
C13	Corner studio	Garden	44	16	60	-	-	£84,900	AVAILABLE

C TYPE - HANGING GARDEN'S VILLAGE

C1(E1), C2(E2), C3(E3), C4(E4), C5(E5), C6(E6)

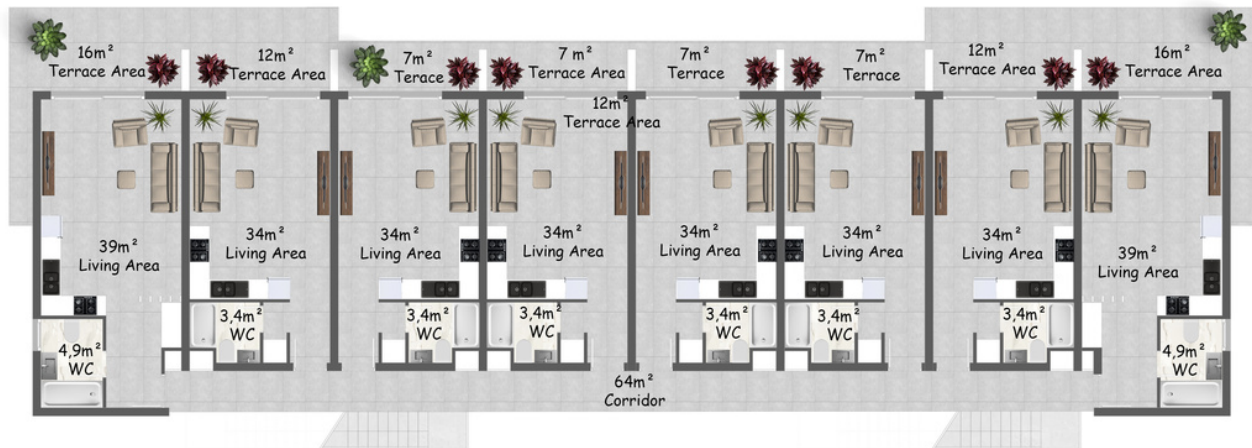


# NØHA

STAND 13.11.2022

D1	Corner studio	Garden	44	16	60	-	-	£89,900	AVAILABLE
D2	Studio	Garden	38	12	50	-	-	£84,900	AVAILABLE
D3	Studio	Garden	38	7	45	-	-	-	RESERVED
D4	Studio	Garden	38	7	45	-	-	£84,900	AVAILABLE
D5	Studio	Garden	38	7	45	-	-	£84,900	AVAILABLE
D6	Studio	Garden	38	7	45	-	-	£84,900	AVAILABLE
D7	Studio	Garden	38	12	50	-	-	£84,900	AVAILABLE
D8	Corner studio	Garden	44	16	60	-	-	-	RESERVED
D9	Corner studio	Penthouse	44	-	44	16	30	-	RESERVED
D10	Studio	Penthouse	38	-	38	12	24	-	RESERVED
D11	Studio	Penthouse	38	7	45	-	24	-	RESERVED
D12	Studio	Penthouse	38	7	45	-	24	-	RESERVED
D13	Studio	Penthouse	38	7	45	-	24	-	RESERVED
D14	Studio	Penthouse	38	7	45	-	24	-	RESERVED
D15	Studio	Penthouse	38	-	38	12	24	-	RESERVED
D16	Corner studio	Penthouse	44	-	44	16	30	-	RESERVED
E1	Corner studio	Garden	44	16	60	-	-	£89,900	AVAILABLE
E2	Studio	Garden	38	12	50	-	-	£84,900	AVAILABLE
E3	Studio	Garden	38	6	45	-	-	£84,900	AVAILABLE
E4	Studio	Garden	38	6	45	-	-	-	RESERVED
E5	Studio	Garden	38	6	45	-	-	£84,900	AVAILABLE
E6	Studio	Garden	38	6	45	-	-	£84,900	AVAILABLE

(G3), E4(G4), E5(G5), E6(G6), E7(G7), E8(G8)  
 I(F3), D4(F4), D5(F5), D6(F6), D7(F7), D8(F8)



# NØHA

STAND 13.11.2022

F1	Corner 2 bedroom	Garden	75	22	97	-	-	£199,900	AVAILABLE
F2	2 bedroom	Garden	75	14	89	5	-	£194,900	AVAILABLE
F3	2 bedroom	Garden	75	14	89	5	-	£194,900	AVAILABLE
F4	Corner 2 bedroom	Garden	75	22	97	-	-	-	RESERVED
F5	Corner 2 bedroom	Penthouse	75	6	81	11	76	-	RESERVED
F6	2 bedroom	Penthouse	75	6	81	4	76	-	RESERVED
F7	2 bedroom	Penthouse	75	6	81	4	76	-	RESERVED
F8	Corner 2 bedroom	Penthouse	75	6	81	11	76	-	RESERVED
G1	Corner 2 bedroom	Garden	75	22	97	-	-	-	RESERVED
G2	2 bedroom	Garden	75	14	89	5	-	£194,900	AVAILABLE
G3	2 bedroom	Garden	75	14	89	5	-	£194,900	AVAILABLE
G4	Corner 2 bedroom	Garden	75	22	97	-	-	£199,900	AVAILABLE
G5	Corner 2 bedroom	Penthouse	75	6	81	11	76	-	RESERVED
G6	2 bedroom	Penthouse	75	6	81	4	76	-	RESERVED
G7	2 bedroom	Penthouse	75	6	81	4	76	-	RESERVED
G8	Corner 2 bedroom	Penthouse	75	6	81	11	76	-	RESERVED

## GARDEN'S VILLAGE

, G4(I4), G3(I3), G2(I2), G1(I1)



# NØHA

STAND 13.11.2022

H1	Corner 2 bedroom	Garden	85	6	91	13	-	-	RESERVED
H2	2 bedroom	Garden	85	6	91	12	-	-	RESERVED
H3	2 bedroom	Garden	85	6	91	12	-	£219,900	AVAILABLE
H4	Corner 2 bedroom	Garden	85	6	91	13	-	£224,900	AVAILABLE
H5	Corner 2 bedroom	Penthouse	85	6	91	-	74	-	RESERVED
H6	2 bedroom	Penthouse	85	6	91	-	74	£239,900	AVAILABLE
H7	2 bedroom	Penthouse	85	6	91	-	74	£239,900	AVAILABLE
H8	Corner 2 bedroom	Penthouse	85	6	91	-	74	£249,900	AVAILABLE
I1	Corner 2 bedroom	Garden	85	6	91	13	-	£224,900	AVAILABLE
I2	2 bedroom	Garden	85	6	91	12	-	£219,900	AVAILABLE
I3	2 bedroom	Garden	85	6	91	12	-	-	RESERVED
I4	Corner 2 bedroom	Garden	85	6	91	13	-	-	RESERVED
I5	Corner 2 bedroom	Penthouse	85	6	91	-	74	£249,900	AVAILABLE
I6	2 bedroom	Penthouse	85	6	91	-	74	£239,900	AVAILABLE
I7	2 bedroom	Penthouse	85	6	91	-	74	-	RESERVED
I8	Corner 2 bedroom	Penthouse	85	6	91	-	74	-	RESERVED

H and I TYPE - HANGING GARDEN'S VILLAGE

I1(K1), I2(K2), I3(K3), I4(K4)  
H1(J1), H2(J2), H3(J3), H4(J4)



Ground Floor Plan Area: Each Unit 91 m<sup>2</sup>

# NØHA

STAND 13.11.2022

H and I TYPE - HANGING GARDEN'S VILLAGE

I5(K5), I6(K6), I7(K7), I8(K8)  
H5(J5), I6(J6), I7(J7), I8(J8)



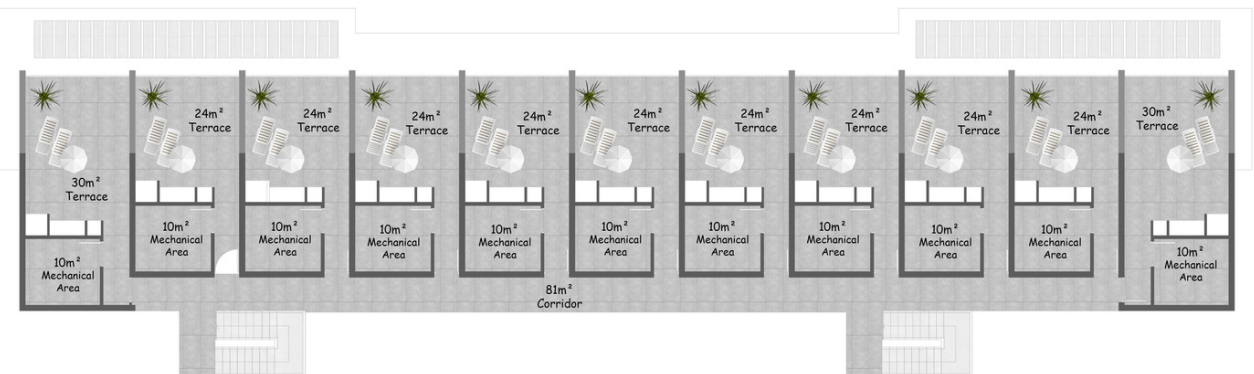
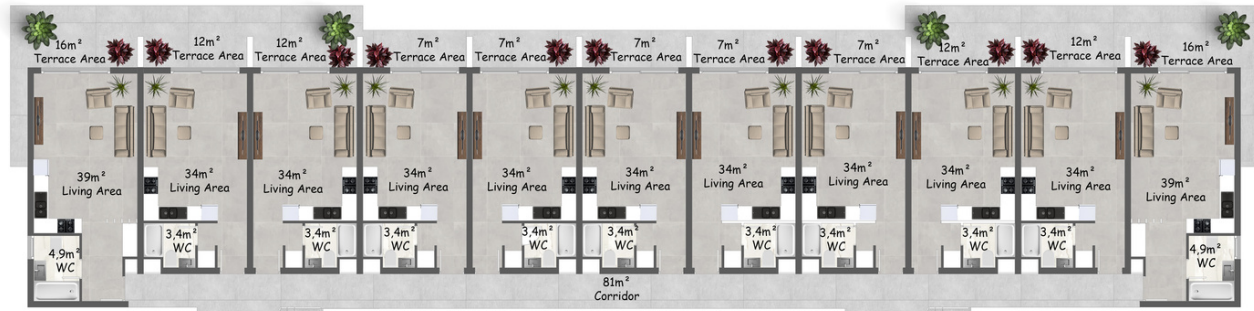
# NOHA

STAND 13.11.2022

J13	Studio	Penthouse	38	-	38	12	24	£89,900	AVAILABLE
J14	Studio	Penthouse	38	-	38	12	24	£89,900	AVAILABLE
J15	Studio	Penthouse	38	7	45	-	24	£89,900	AVAILABLE
J16	Studio	Penthouse	38	7	45	-	24	£89,900	AVAILABLE
J17	Studio	Penthouse	38	7	45	-	24	£89,900	AVAILABLE
J18	Studio	Penthouse	38	7	45	-	24	£89,900	AVAILABLE
J19	Studio	Penthouse	38	7	45	-	24	£89,900	AVAILABLE
J20	Studio	Penthouse	38	-	38	12	24	£89,900	AVAILABLE
J21	Studio	Penthouse	38	-	38	12	24	-	RESERVED
J22	Corner studio	Penthouse	44	-	44	16	30	-	RESERVED

J TYPE - HANGING GARDEN'S VILLAGE

J12(L12), J13(L13), J14(L14), J15(L15), J16(L16), J17(L17), J18(L18), J19(L19), J20(L20), J21(L21), J22(L22)



# NØHA

STAND 13.11.2022

K1	Corner 3 bedroom	Garden	119	39	158	-	-	£279,900	AVAILABLE
K2	Corner 3 bedroom	Garden	119	39	158	-	-	-	RESERVED
K3	Corner 3 bedroom	Penthouse	119	-	119	21	132	-	RESERVED
K4	Corner 3 bedroom	Penthouse	119	-	119	21	132	-	RESERVED
L1	Corner 3 bedroom	Garden	119	39	158	-	-	-	RESERVED
L2	Corner 3 bedroom	Garden	119	39	158	-	-	£279,900	AVAILABLE
L3	Corner 3 bedroom	Penthouse	119	-	119	21	132	-	RESERVED
L4	Corner 3 bedroom	Penthouse	119	-	119	21	132	£299,900	AVAILABLE

K and L TYPE - HANGING GARDEN'S VILLAGE

K1(N1), K2(N2), L1(M1), L2(M2)



Ground Floor Plan Area: Each Uni



# NOHA

STAND 13.11.2022

K and L TYPE - HANGING GARDEN'S VILLAGE

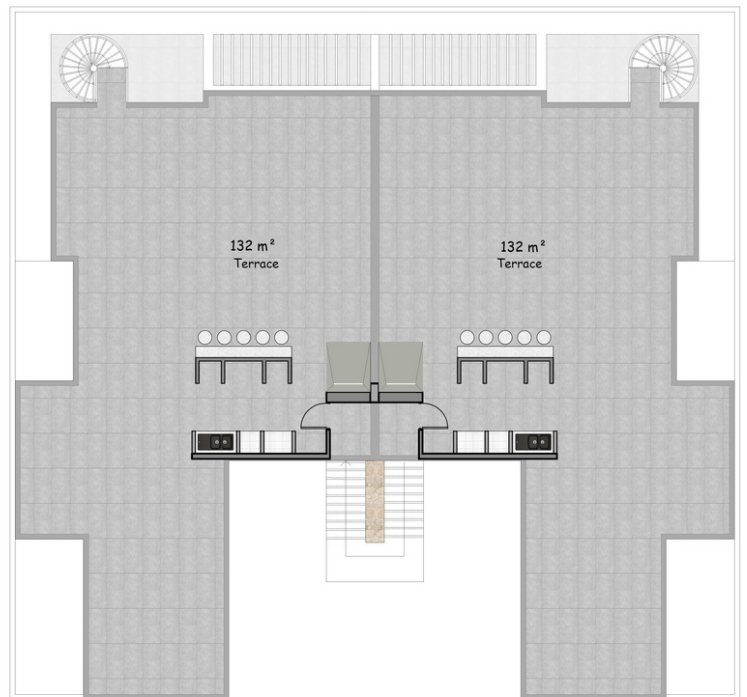
K3(N3), K4(N4), L3(L3), L4(M4)

K and L TYPE - HANGING GARDEN'S VILLAGE

K3(N3), K4(N4), L3(L3), L4(M4)



First Floor Plan Area: Each Unit 158 m<sup>2</sup>



Roof Floor Plan Area: Each Unit 57 m<sup>2</sup>

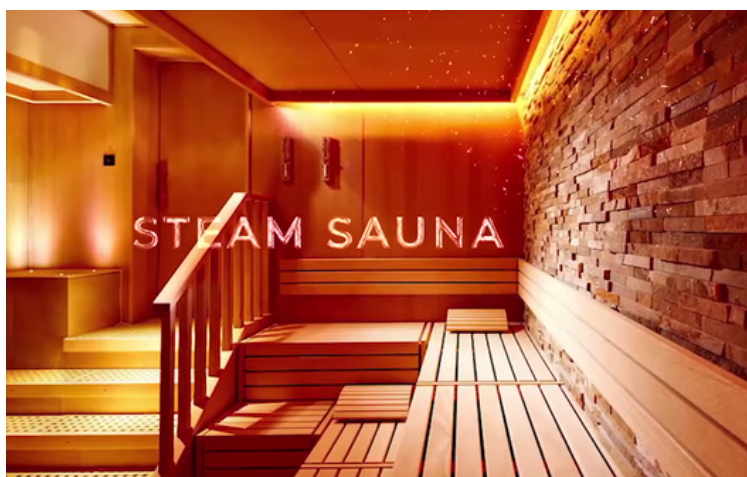


# N°HA





# N°HA



# NºHA



FÜR WEITERE  
INFOS ODER  
EINE BEGEH-  
UNG MELDE  
DICH GERNE  
BEI UNS.

WIR FREUEN UNS AUF  
DICH! DEIN NZ-TEAM

INFO@IMMOBILIEAM  
MEER.COM

+49 1573 1909019

IMMOBILIE  
AM MEER

NZ